



Floral Frontiers: Exploring the Microbiome of Flowers

**S. M. Palghadmal^{1*},
R. M. Palghadmal²,
Nandeesh J³,
N. R. Chaudhari⁴ and
Trupthi M⁵**

¹Assistant Professor, Department of Horticulture, College of Agriculture, Sonai University: Mahatma Phule Krishi Vidyapeeth, Rahuri, Maharashtra

²Ph.D. Scholar, Department of Plant Pathology and Microbiology, Mahatma Phule Krishi Vidyapeeth, Rahuri, Maharashtra

³Ph.D. Scholar, Department of Horticulture, University of Agricultural Sciences, Bangalore

⁴Junior Scientific Officer, National Centre for Organic & Natural Farming, Ghaziabad, MoA & FW, GOI

⁵M.Sc. Scholar, Department of Agricultural Microbiology, TNAU, Tamil Nadu



Open Access

*Corresponding Author

S. M. Palghadmal*

Article History

Received: 10. 3.2026

Revised: 15. 3.2026

Accepted: 20. 3.2026

This article is published under the terms of the [Creative Commons Attribution License 4.0](https://creativecommons.org/licenses/by/4.0/).

INTRODUCTION

Flowers are traditionally studied as reproductive structures responsible for attracting pollinators and facilitating fertilization. However, they are also complex microhabitats that host diverse microbial communities. These communities include bacteria, fungi and yeasts that colonize floral tissues such as nectar, petals, stamens and pistils. The study of the floral microbiome represents a rapidly emerging field at the intersection of plant biology, microbiology and ecology. Unlike root-associated microbiomes, which are relatively stable and influenced by soil conditions, floral microbiomes are highly dynamic and transient. They are shaped by environmental exposure, pollinator visitation and plant-specific traits. Each flower can be considered a unique ecological niche where microbial communities assemble, interact and evolve.

Microorganisms in flowers influence key aspects of plant reproduction. They can modify nectar composition, alter floral scent and impact pollinator preferences. Some microbes provide protective functions by inhibiting pathogens, while others may negatively affect plant fitness by consuming nectar resources or transmitting diseases. Understanding the floral microbiome is particularly important in the context of global environmental change and pollinator decline. Changes in microbial communities can influence plant pollinator interactions and ecosystem stability. This article explores the diversity, ecology and functional significance of floral microbiomes, highlighting recent advances and future research directions.

1. Composition and Diversity of the Floral Microbiome

The floral microbiome comprises a wide range of microorganisms, including bacteria, yeasts and filamentous fungi. These organisms vary in abundance and composition depending on plant species, geographic location and environmental conditions. Bacterial communities in flowers are often dominated by taxa belonging to the phyla Proteobacteria, Firmicutes and Actinobacteria. Common genera include *Pseudomonas*, *Bacillus* and *Micrococcus*. These bacteria are capable of surviving in nutrient-limited environments and can influence nectar chemistry and antimicrobial properties.

Yeasts are among the most abundant eukaryotic microbes in floral nectar. Genera such as *Metschnikowia*, *Candida* and *Saccharomyces* are frequently reported. Yeasts play a significant role in fermenting nectar sugars and producing volatile compounds that affect pollinator attraction. Fungal communities include both beneficial and pathogenic species. Some fungi contribute to nutrient cycling and plant defence, while others cause floral diseases.

The diversity of the floral microbiome is influenced by factors such as flower morphology, nectar composition and environmental exposure. The spatial distribution of microbial communities across different floral tissues is illustrated in Figure 1.

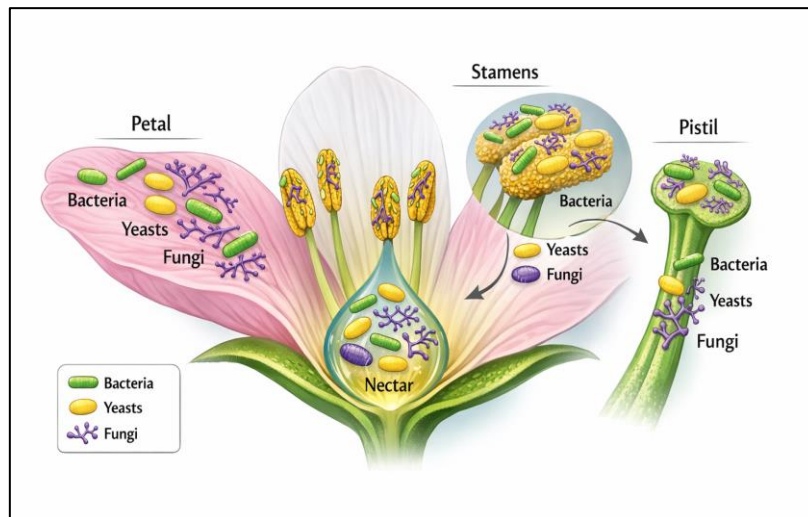


Figure 1. Distribution of microbial communities across floral structures, illustrating the colonization of petals, nectar, stamens and pistils by bacteria, yeasts and fungi in the floral microbiome.

Table 1 Major Microbial Groups in Floral Microbiomes

Microbial Group	Common Genera	Functional Role
Bacteria	<i>Pseudomonas</i> , <i>Bacillus</i>	Nutrient transformation, antimicrobial activity
Yeasts	<i>Metschnikowia</i> , <i>Candida</i>	Sugar fermentation, scent modification
Fungi	<i>Cladosporium</i> , <i>Fusarium</i>	Decomposition, pathogen interaction

2. Sources of Microbial Colonization

Floral microbiomes originate from multiple sources, including the surrounding environment, plant tissues and pollinators. Airborne particles, soil dust and rainwater contribute to microbial deposition on floral surfaces. Pollinators play a particularly important role in microbial dispersal. As insects visit flowers to collect nectar and pollen, they transfer microorganisms between

plants. Bees, butterflies and other pollinators act as vectors, facilitating the movement of microbes across landscapes.

Plant tissues themselves may serve as sources of microbes. Endophytic bacteria and fungi can migrate from internal tissues to floral structures during development. Human activities, such as agricultural practices and pesticide use, can also influence microbial colonization patterns.

3. Ecological Interactions within Floral Microbiomes

Floral microbiomes are characterized by complex interactions among microbial species as well as between microbes and their host plants. These interactions can be cooperative, competitive or antagonistic. Competition for limited resources such as nectar sugars often shapes microbial community structure. Fast growing species may dominate the niche, suppressing slower growing organisms.

Mutualistic interactions can occur when microbes provide benefits to the plant, such as protection against pathogens or enhancement of

pollinator attraction. For example, certain yeasts produce volatile compounds that increase floral scent intensity. Antagonistic interactions include the production of antimicrobial compounds that inhibit competing microbes. These interactions contribute to the stability and resilience of microbial communities.

Microbe pollinator interactions are also significant. Microbial metabolites can influence pollinator behaviour, affecting visitation rates and pollination success. The complex interactions between plants, microbes and pollinators are summarized in Figure 2.

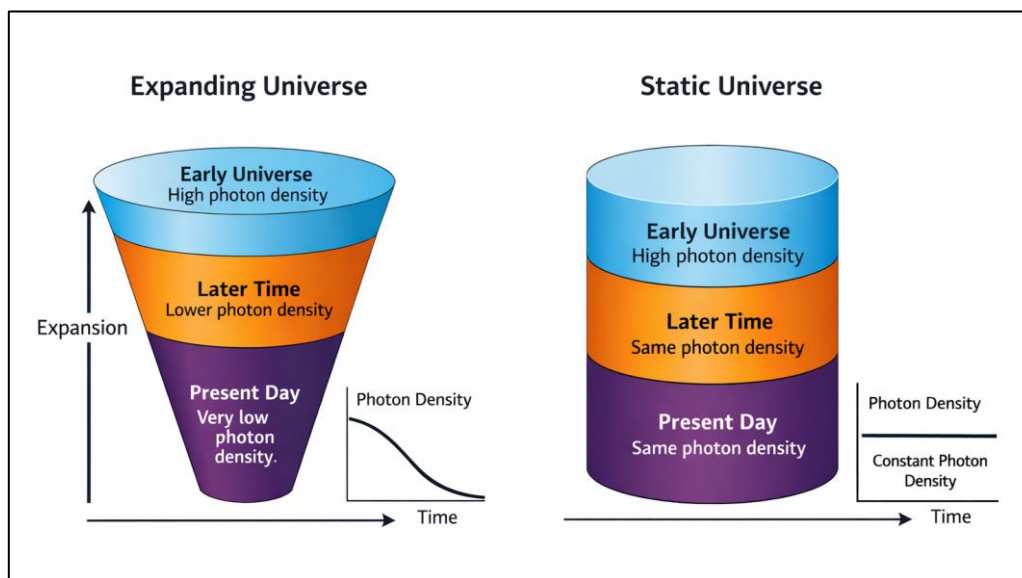


Figure 2. Conceptual model of interactions between floral microbiomes, plant hosts and pollinators, highlighting microbial transmission, nectar modification and feedback effects on pollination dynamics.

4. Functional Roles of Floral Microbiomes

- ❖ The floral microbiome plays a range of functional roles that impact plant reproduction and ecosystem dynamics.
- ❖ One key function is the modification of nectar chemistry. Microbes can alter sugar concentration, pH and amino acid composition, which in turn affects pollinator preferences.
- ❖ Microbial activity also influences floral scent. Volatile organic compounds produced

by microbes can enhance or alter plant derived scents, thereby shaping pollinator attraction.

- ❖ Some microbes provide protective functions by inhibiting pathogens through the production of antimicrobial substances. This contributes to plant health and reproductive success.
- ❖ Conversely, certain microbes may have negative effects by consuming nectar resources or introducing pathogens.

Table 2 Functional Roles of Floral Microorganisms

Function	Description	Ecological Impact
Nectar modification	Changes in sugar and nutrient composition	Alters pollinator behavior
Scent production	Release of volatile compounds	Enhances pollinator attraction
Pathogen suppression	Production of antimicrobial compounds	Improves plant health
Resource competition	Consumption of nectar resources	May reduce pollination efficiency

5. Methods for Studying Floral Microbiomes

- ❖ Advances in molecular biology and sequencing technologies have revolutionized the study of floral microbiomes. Culture-dependent methods, although useful, capture only a fraction of microbial diversity.
- ❖ High-throughput sequencing techniques such as 16S ribosomal RNA gene sequencing and internal transcribed spacer sequencing enable comprehensive analysis of bacterial and fungal communities.
- ❖ Metagenomics provides insights into the functional potential of microbial communities by analyzing their genetic content.
- ❖ Metatranscriptomics and metabolomics further enhance understanding by examining gene expression and metabolic activity.
- ❖ Microscopy and imaging techniques complement molecular approaches by providing spatial information about microbial colonization.

6. Environmental Factors Shaping Floral Microbiomes

- ❖ Environmental conditions play a crucial role in determining the composition and function of floral microbiomes.
- ❖ Temperature influences microbial growth rates and metabolic activity. Warmer conditions generally promote higher microbial abundance.
- ❖ Humidity affects microbial survival and dispersal. High humidity facilitates microbial colonization and persistence on floral surfaces.
- ❖ Geographic location and habitat type contribute to differences in microbial diversity. Urban, agricultural and natural ecosystems exhibit distinct microbial communities.
- ❖ Seasonal variation also affects floral microbiomes, with changes in temperature, rainfall and pollinator activity influencing community dynamics.

7. Implications for Agriculture and Pollination Biology

- ❖ Understanding the floral microbiome has significant implications for agriculture and

pollination management. Crop plants rely heavily on pollinators for reproduction, and microbial interactions can influence pollination success.

- ❖ Manipulating floral microbiomes offers potential strategies for improving crop yield and quality. Beneficial microbes can be introduced to enhance pollinator attraction or suppress pathogens.
- ❖ The decline of pollinator populations is a major concern globally. Floral microbiomes may play a role in pollinator health by influencing nectar quality and microbial exposure.
- ❖ Integrating microbiome research into agricultural practices can contribute to sustainable crop production and ecosystem resilience.

8. Challenges and Future Perspectives

Despite significant progress, several challenges remain in the study of floral microbiomes. The transient nature of these communities makes them difficult to sample and analyze. Distinguishing between resident and transient microbes requires careful experimental design. Functional validation of microbial roles remains a key challenge. Future research will benefit from integrative approaches that combine genomics, ecology and experimental studies. Advances in sequencing technology and computational analysis will continue to expand our understanding. The development of microbiome-based applications in agriculture and conservation represents a promising area of research.

CONCLUSION

The exploration of the floral microbiome represents a significant advancement in our understanding of plant ecology and microbial interactions, revealing that flowers are not merely passive reproductive structures but dynamic microecosystems shaped by intricate biological relationships. These microbial communities, composed of bacteria, yeasts and fungi, play essential roles in modifying nectar composition, influencing floral scent and mediating plant pollinator interactions, thereby directly affecting reproductive success and ecosystem functioning. The integration of

modern molecular tools such as metagenomics and metabolomics has uncovered previously hidden diversity and functional complexity within floral habitats, highlighting the importance of microbial processes in shaping plant fitness and pollinator behavior. Environmental factors, including climate conditions and pollinator activity, further influence the composition and dynamics of these communities, making them highly responsive to ecological change. While challenges remain in distinguishing transient from stable microbial populations and in validating functional roles under natural conditions, the potential applications of floral microbiome research are substantial. From enhancing crop pollination efficiency to developing sustainable strategies for disease management, this field offers promising avenues for agricultural innovation and biodiversity conservation. As research continues to evolve, a deeper understanding of floral microbiomes will contribute to the development of holistic approaches that integrate plant, microbial and pollinator health, ultimately supporting resilient ecosystems and sustainable food systems.

REFERENCES

- Aizenberg Galili, L., & Belkin, S. (2019). Microbial communities in nectar and their impact on plant pollinator interactions. *Trends in Microbiology*, 27(8), 688–699.
- Herrera, C. M., de Vega, C., Canto, A., & Pozo, M. I. (2009). Yeasts in floral nectar ecological and evolutionary implications. *Annals of Botany*, 103(9), 1415–1423.
- Junker, R. R., Romeike, T., Keller, A., & Langen, D. (2014). Density dependent negative responses by bumblebees to bacteria isolated from flowers. *Apidologie*, 45(4), 467–477.
- Kwong, W. K., & Moran, N. A. (2016). Gut microbial communities of social bees. *Nature Reviews Microbiology*, 14(6), 374–384.
- Pozo, M. I., Herrera, C. M., & Bazaga, P. (2012). Species richness of yeast communities in floral nectar of southern Spanish plants. *Microbial Ecology*, 64(2), 543–552.
- Vannette, R. L., & Fukami, T. (2016). Nectar microbes can reduce secondary metabolites in nectar and alter effects on nectar consumption by pollinators. *Ecology*, 97(6), 1410–1419.
- Vorholt, J. A. (2012). Microbial life in the phyllosphere. *Nature Reviews Microbiology*, 10(12), 828–840.